



ComfortSystem— our experience is your guarantee

# Operating Instructions

# Lifting Pole



**ComfortSystem**  
— our experience is your guarantee



# Contents

1. Introduction	3
2. Directions for the operating instructions	4
3. Installation instructions	4
4. First use	6
5. Field of application / purpose	6
6. Technical data / specification	7
7. Product Information	8
8. Performance description	9
8.1. Bar and maximum strain	9
8.2. Height adjustment of the belt	9
8.3. Fitting to the trapeze bar - slipping blockade	9
8.4. Parking in non-use position	9
8.5. Inserting the strap, e.g. after cleaning	10
9. Cleaning and disinfection	11
9.1. Initial cleaning / hygiene of the handle surface	11
9.2. Disinfection / sterilization	11
9.3. Maintenance instructions	12
9.4. Application of detergents	12
9.5. Application of disinfections	12
9.6. Damages of parts and surfaces	12
10. Security tips and residual risks	13
11. Storage	14
12. Attendance and maintenance	14
13. Economic lifetime	15
14. Disposal and recycling	15
15. Contact	15



# 1. Introduction

Congratulations on your choice accessories from Comfort System Scandinavia AB. To guarantee that our products are manufactured with a uniform and high quality, as well as with as little environmental impact as possible, Comfort System Scandinavia AB is certified according to ISO 9001 and ISO 14001.

Every bed is manufactured in Sweden according to strict quality standards and each bed is tested in the factory. Each bed is accompanied by a signed control report describing the various parts that have been tested.

Products that do NOT meet our quality requirements are rejected. If the product should be marred by a fault despite the quality control, please contact us for attention. Moreover, please contact us if you have other questions or problems.

---

## Comfort System Scandinavia AB

Box 4034, Vistakullevägen 18

SE-561 04 HUSKVARNA

SWEDEN

Telephone +46 36 51590

Fax +46 36 50001

E-mail: [info@comfortsystem.se](mailto:info@comfortsystem.se)

[www.comfortsystem.se](http://www.comfortsystem.se)

---



To obtain a high level and use of the accessory,  
SHALL THE INSTRUCTIONS READ CAREFULLY!



## 2. Directions for the operating instructions

These operating instructions are addressed to skilled nursing staff respectively to every person who is in charge of the initial and further operation of this product.



**Each handling of this product requires exact knowledge and observation of these operating instructions. Therefore it has to be kept safely until disposal. To avoid operating mistakes and grant a failure-free operation the operating instructions have to be accessible to the operating personnel at any time.**

The texts and graphics of these operating instructions do not necessarily comply with the exact delivery quantity, as modifications are reserved. All drawings and graphics are not drawn to scale.

## 3. Monteringsanvisningar

### 3.1 Installing the lift frame in the sprung base

Place the lift frame in the bed mountings (head end). Can be placed on the right or left side. Check that the lift frame is placed correctly by trying to twist the lift frame – it must NOT twist. Upon correct installation the lift frame must point IN TOWARDS THE CENTRE OF THE BED.





### 3.2 Installing the handle

Hang the handle on the lift frame in such a way that the lift frame's hook prevents the handle from sliding off the lift frame.



The lift frame must NOT be used in any other position than the correct position described according to point 1. The lift frame has a lifting capacity of max 75 kg!



## 4. Initial operation

Before the initial operation these operating instructions have to be read thoroughly.

The bar has to be checked for damages due to the transport.

The initial cleaning of the handle has to be carried out under consideration of the approved cleansers and disinfectants.

The bar has to be exclusively mounted to a trapeze bar destined for it. Subsequently the proper fit has to be checked.

## 5. Field of Application / Purpose

The bar is usually used in the field of nursing, hospital and rehabilitation. It exclusively serves this purpose.

It serves as an accessory for nursing- and sickbeds which are used for the bedding, compensation and palliation of handicapped people in above mentioned accommodations as well as for making the nursing tasks easier.

Other applications have to be agreed in advance and in writing.

The product has to be used as a working tool for nursing and is subject to the regulations of the employer's Liability Insurance Association (Berufsgenossenschaft BG).



## 6. Technical Data

- > measurements: approx. 30 x 15 cm (handle)
- > height adjustment belt: 32 - 50 cm (measured from handle surface top to of trapeze bar)
- > max. bearing capacity: 75 kg
- > weight: 280 g handle with belt-system
- > application environment:
  - the environmental temperature is in the range of + 10 ° C to + 40 ° C
  - the relative humidity is at max. 80 %
  - the atmospheric pressure is in the range of 700 hPa – 1060 hPa

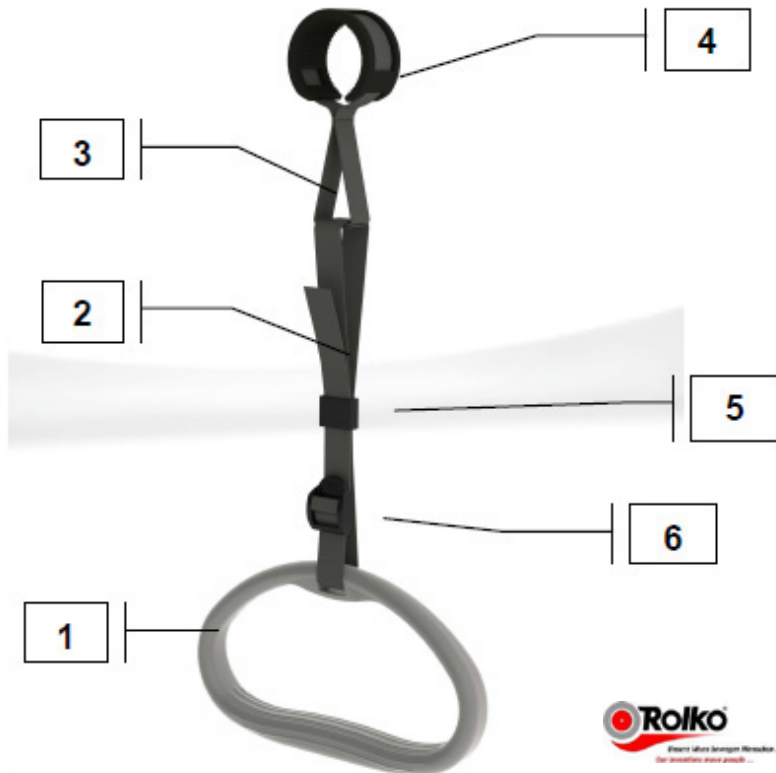


Max  
**75** kg

Utilisation with a load of more than 75 kg is not allowed!



## 7. Product information



- 1. Handle bar
- 2. Adjustable belt
- 3. Inflexible belt

- 4. Hanger with slip protection
- 5. Belt guidance
- 6. Plastic buckle





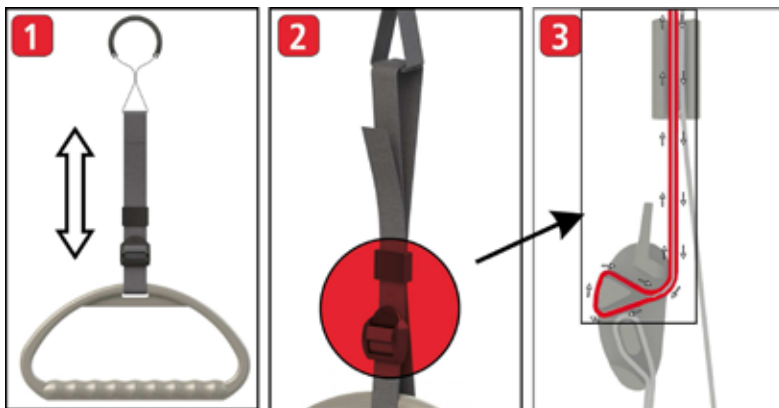
## 8. Performance Description

### 8.1 Handle Bar and Maximum Strain

The handle bar makes it easy for people to sit up and move in bed. To reach for it choose the moulded area of the bar. The maximum strain amounts to 75 kg.

### 8.2 Height Adjustment of the Belt

The height adjustment has to be carried out by adjusting the belt with the plastic buckle. The handle must always be unburdened.



Side view: Plastic buckle + belt strap

### 8.3 Fitting at the Sit-Up Aid – Slipping Blockade

The handle bar has to be mounted to the trapeze bar / sit up aid with the hanger. The integrated slipping protection has to be attached properly to the mounting points at the trapeze bar.

### 8.4 Parking in a Non-Use Position

If the bar is not used, it can be hung over the trapeze bar / sit up aid. The plastic handle has to be checked that it cannot slip off the trapeze bar unintentionally.



### 8.5 Inserting the strap, e.g. after cleaning



Side view: Plastic buckle + belt strap



## 9. Cleaning and Disinfection

The bar has to be removed from the trapeze bar / sit up aid before cleaning and disinfecting it. The cleaning and disinfection are only allowed to be carried out under consideration of the following indications. It is not allowed to be treated in pressure chambers / by autoclave, sterilization machines or cleaning and disinfection machines.

### 9.1 Initial Cleaning / Hygiene of the Handle Bar Surface

Before the initial operation the bar has to be cleaned according to the following directions. The hygiene of the handle is ensured by application of polypropylene and the moulding which supports a simple cleaning. Additional biocides were not used thus not increasing the risks of allergies and resistances.

### 9.2 Disinfection / Sterilization

The handle has to be disinfected regularly, however, at least before each change of the inhabitant / patient. For the disinfection of the bar the following products are recommended, which may only be replaced by equivalent products.

From the field of formaldehydes and / or other aldehydes resp. derivatives:

ALDASAN 2000, ALDOSPRAY – CONCENTRATE, BURATON 10F, FORMALDEHYDE SOLUTION DAB 10, LYSOFORM, LYSOFORMIN 2000

*From the field of percompounds:*

APESIN AP 100, DISMOZON PUR, PERFORM, WOFASTERIL

*From the field of amphoteric surfactant:*

FRANKO-DES, TENSODUR 103

These products are only to be used according to the producer's directions! This concerns especially the dosage of the products and the potential danger in combining them with other products.

Please, contact the reseller or producer in case of any doubts, as the application of damaging substances may cause premature deterioration, a possible failure of the material and hereby endangerment.



### 9.3 Maintenance Instructions

The particular cleansers and disinfectants have only to be applied by the dosage prescribed by the producer. Before the application of other cleaning and disinfection products please check with the producer in any case.

The application should be carried out with a damp rug.

### 9.4 Application of Cleansers

Use lukewarm water for the cleaning process. The application of non-abrasive, pH-value neutralized, customary cleansers are possible under consideration of item 8.5.

### 9.5 Application of Disinfectants

Do not apply the following substances of disinfectants. They change the characteristics of the material and lead to premature deterioration, which can cause a potential failure of the material and hereby endangerments:

- All phenol or phenol derivatives as well as other aromatic hydrocarbons
- Chlorine organic or inorganic substances with active chlorine
- bases
- All formaldehydes and / or other aldehydes respectively derivatives which have not been released under item 8.2.

### 9.6 Damages of Components and Surfaces

If damages at the handle and its components are visible, it has to be exchanged immediately.



As plastics are only restrictedly resistant to age, it is urgently recommended in case of the security-relevant components to examine these in the course of the regular security checks and to exchange them if necessary.



Attention: For security reasons the infiltration or application of other liquids than water (not allowed e.g. solvents, oils, bases, acid media, cleansers, disinfectants etc.) in or on parts of the handle has to be urgently avoided.



## 10. Security Advice and Redisual Risks



- > These operating instructions have to be read and observed before using the handle.
- > The handle may not be operated if it shows deficiencies by which people, employees or third parties can be endangered.
- > The user has to convince himself of the reliability and the proper condition of the handle and the trapeze bar before taking it into operation.
- > Improper use of the handle can cause endangerments by:

Improper operation of the functions

Use of the handle by children under the age of 12,

Exceeding the safe work load of 75 kg has to be absolutely avoided, as it can lead to damages and destruction of the handle.



### Warning

The sit up aid with strap withstands high tensile strain when normally used.

The handle may not be multiply rotated ( $>180^\circ$ ) incl . belt about its vertical center in a hung up position. This can damage the medical bar.





## 11. Storage

**For storing the bar the following operations should be carried out:**

1. Carry out performance check before storage
2. Cover up or pack the handle in a way that it does not become dirty or damaged. It has to be protected from permanent UV-light.
3. Attach date of storage ( because of maintenance terms)
4. Make sure that the operating instructions and all operation stickers are at hand.
5. Storage only in closed rooms (10-40°C; max. 80 % air humidity).

## 12. Attendance and Maintenance

The handle bars are generally developed for a service life of 5 years and need extremely low maintenance, because at the development of the products it was paid attention that a minimum of maintenance effort is granted.

However, according to experience it comes also to careless handling of products in daily operations and by rough operation also to quicker aging and deterioration of certain components, without the manufacturer having direct influence on it.

Therefore maintenance checks should be carried out at the operating company as a matter of routine – thus also granting the availability of the product in its own interest.

The maintenance should exclusively be carried out by competent specialists.

The manufacturer is liable for the security and reliability of the product only then, if it is regularly maintained and used according to the operating, handling and security advice in this operating instruction manual.

If a performance check, an inspection or maintenance reveals serious deficiencies, which cannot be repaired, the product has to be disabled for further usage.



In general the manufacturer assumes maintenance of the handle bars and the nursing- and sickbeds according to the appropriate current regulations of the techniques, as nursing- and sickbeds are work tools which are subject to the regulations for the prevention of industrial accidents (UVV) of the employer's Liability Insurance Association. Also accessories – as the handle bar – have to undergo a security check.

**Especially the completeness, the safe performance and the aging have to be checked critically.**

Every single components of the handle which are visibly mounted have to be controlled for abrasion, scratches or other traces of deterioration in the course of an inspection or performance check, the reason has to be determined and repaired by exchanging the single components. All interlocks and adjustments have to be carried out appropriately.

## 11. Economic Lifetime

At proper operation, cleaning, maintenance and reparation an economic lifetime of 5 years can be anticipated for the handle.

## 12. Disposal

**The handle bar contains plastic parts of PP, POM and PVC.**

The plastic parts incurred by maintenance and reparation have to be professionally disposed of according to laws and regulations.

## 12. Contact

info@rolko.com / www.rolko.com

Operating Instructions TGN-RSG70/Status 2010-12-09/©Rolko Kohlgrüber GmbH Reprint, also in extracts, only with prior permission by the editor.

All rights reserved. Alterations for reasons of technical development reserved. All technical data are characteristics and subject to construction- and manufacturing-conditioned tolerances.



ComfortSystem – *our experience is your guarantee*

## Our experience - your guarantee

Since its start in 1987, Comfort System has kept more or less the same ownership and has operated under the same name – a fact that is almost unique today in the branch. Our long experience and knowledge of our product assortment, means that as a customer you can feel secure in your choice of supplier.



**ComfortSystem**

*– our experience is your guarantee*

Comfort System Scandinavia AB • Box 4034 • 561 04 Huskvarna  
Tel 036-515 90 • Fax 036-500 01 • [info@Comfortsystem.se](mailto:info@Comfortsystem.se)